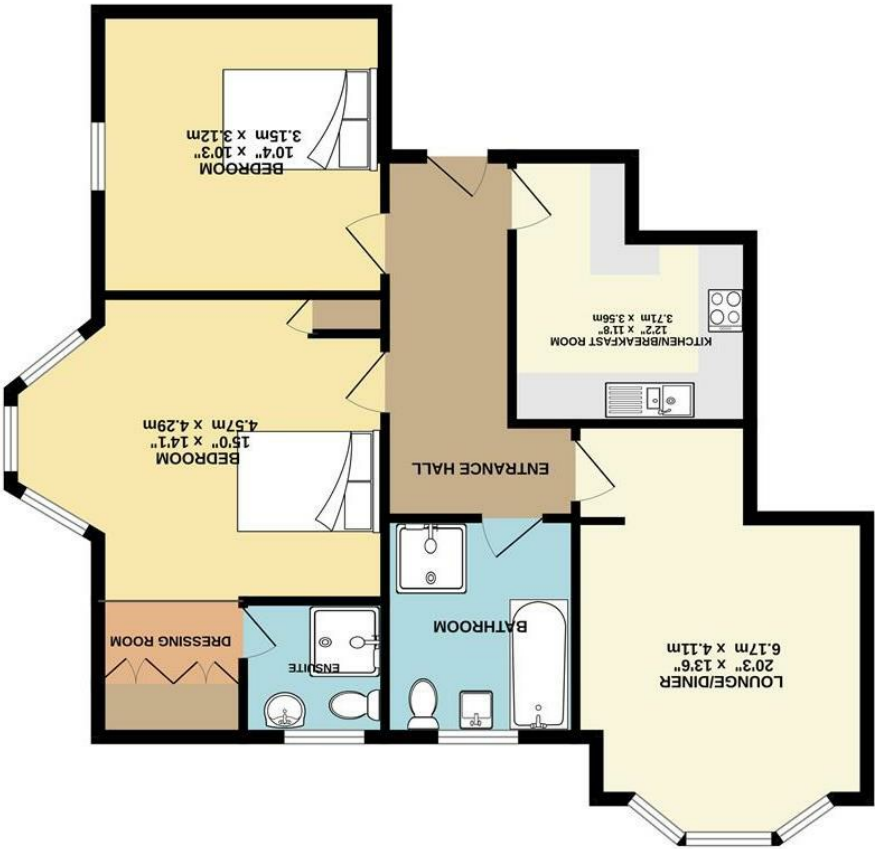


These particulars are believed to be accurate but they are not guaranteed and do not form a contract. Neither Jordan Fishwick nor the vendor or lessor accept any responsibility in respect of these particulars, which are not intended to be statements or representations of fact and any intending purchaser or lessee must satisfy himself by inspection or otherwise as to the correctness of each of the statements contained in these particulars. Any floorplans on this brochure are for illustrative purposes only and are not necessarily to scale.

While every attempt has been made to ensure the accuracy of the floorplans contained here, measurements of rooms, windows, doors and any other are approximate and no responsibility is taken for any error, omission or misstatement. This plan is for illustrative purposes only and should be used as such by any prospective purchaser. The services, systems and appliances shown have not been tested and no guarantee, as to their operation or efficiency can be given.



GROUND FLOOR  
890 sq.ft. (82.7 sq.m.) approx.







15 Highgate Road Altrincham  
WA14 4QZ  
£350,000



The Property

NO ONWARD CHAIN. Located within the extended part of an impressive converted Victorian Mansion House this well proportioned ground floor apartment is positioned within a secure and gated development, in a highly sought after elevated Altrincham position, which is only a 1/2 mile walk into the town center, with it's shops and city transport links.

In brief the property benefits from a communal entrance with intercom, entrance hall, lounge diner with bay window, kitchen breakfast room with integrated appliances, two double bedrooms with the main bedroom including a dressing area and ensuite shower room, and finally the four piece main bathroom. The property also includes an alarm system.

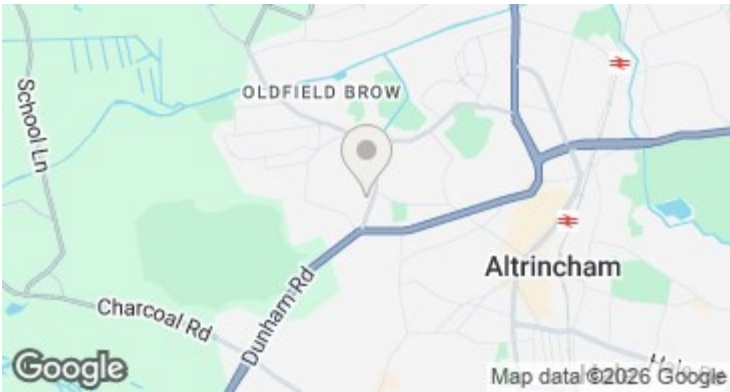
Internally the property offers the opportunity to reconfigure to a more open plan lifestyle which has been completed by other apartments in the development, by opening the kitchen breakfast room into the lounge diner.

Externally there are well maintained and landscaped communal gardens with an allocated parking space, with the addition of ample visitor parking available to visiting friends and families.

The development consists of 14 apartments within the original mansion house and extended parts and 1 Coach house, with the renovations and building works completed approximately 2002.

Directions

WA14 4QZ



- No Chain
- Ground Floor Apartment
- Leasehold - 951 Years Remaining
- £75 p.a. Ground Rent
- £2,500 Service Charge
- 2 Bed 2 Bath
- Allocated Parking
- Gated Entrance
- Lounge Diner and Seperate Kitchen Breakfast
- Communal Gardens

Postcode - WA14 4QZ  
EPC Rating - C  
Floor Area - 890.00 sq ft  
Local Authority - Trafford  
Council Tax - D

